

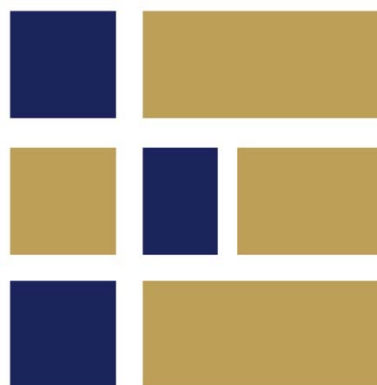
ROSELINE GRANET

SCULPTOR

INTRODUCED BY

GALERIE des LYONS

PROUD MEMBER OF
THE PRESTIGIOUS ASSOCIATION
« CARRÉ RIVE GAUCHE » OF THE
HISTORICAL 7TH DISTRICT OF PARIS.



CARRÉ RIVE GAUCHE
ANTIQUAIRES & GALERIES D'ART - PARIS VI & VII

PARIS
9 rue de Beaune,
75007, Paris, France
LB@galerie-des-lyons.fr
+33 (0)6 83 85 12 73





PARIS
9 rue de Beaune,
75007, Paris, France



BIOGRAPHY

Roseline Granet is a French sculptor and pastelist painter born on January 28, 1936, in Paris. It is the daughter-in-law of André Granet (renowned architect and personality of the French aeronautics).

Roseline was eighteen years old when she sailed for New York in 1954. She enrolled in the Art Student's League, where she studied drawing and painting. It is there that she discovers, in particular, Pollock and Mondrian, still almost unknown in France, and explores with passion all the riches of the American collections.

On her return to Paris, she turned to sculpture, on the advice of Viera da Silva, and attended the Zadkine workshop at La Grande Chaumière from 1956 to 1959.

Zadkine, she says, taught him to love sculpture. He communicated to his students an ardour, a faith, a respect for art:

« when we sculpt, we do nothing else, we devote ourselves to it ».

At the Grande Chaumière, she also met Sam Szafran, then a young painter, then Jacques Delahaye, a sculptor, who encouraged her to set up the Clementi Foundry.

« They are the ones who opened my eyes," she said with simplicity. "Under their influence, I made certain choices, including the refusal of pure abstraction. »

This time, she always evokes it with emotion: years of fever, friendships, discoveries, followed by the creation, with Jacques Delahaye, of the Clémenti Foundry, in Meudon, in 1960, located a few steps from the workshop of Auguste Rodin.

She was twenty-five years old. All her work developed alongside the foundry, in close relationship with her, and was nourished by it.

Since then, she has worked in the same workshop, where she has worked for almost sixty years.

« I don't really think about the result when I'm working. I start a sculpture simply to satisfy the desire of my hands: I put a little plaster on an armature, and then a gesture leads to the other, quite naturally. What matters to me, what I really like, is the enthusiasm, the fervor, sometimes the frenzy I feel when I work. »

Interview with Alice Rewald – excerpts

BIBLIOGRAPHY

Personal exhibitions (selection)

- 2017 Villandry Castle, Villandry, France
- 2014 Les Dominicaines, Pont-L'Évêque, France
Galerie Martel Greiner, Paris, France
- 2013 (2009-2013) Galerie Martel Greiner, Paris, France
- 2010 L'embarcadère, Montceau-les-Mines, France
- 2009 (1974-2009) Galerie Darthea Speyer, Meudon, France
- 2005 Oda Park, Venray, Netherlands
- 2003 Galerie Simon Blais, Montreal, Canada
- 2001 C.A.R, Montceau-les-Mines, France
- 1998 Museum of Art and History, Orangerie du Domaine, Meudon, France
- 1993 Cultural Center of Saint-Nazaire, Saint-Nazaire, France
- 1989 Espace Malraux, Joué-les-Tours, France
- 1987 Cultural Action Center of Douai, Douai, France
- 1985 Contemporary Art Center of Rouen, Rouen, France
- 1979 PARIS / LUND, Lund, Sweden

Collective exhibitions (selection)

- 2018 (2011-2018), Galerie Martel Greiner, Brussels, Belgium
- 2017 Garden of Sculpture, Bois-Guilbert Castle, Bois-Guilbert, France
- 2016 Bestiaire, Galerie Martel Greiner, Paris, France
- 2013 Vingt Sculpteurs, Galerie Michèle Guérin, Paris, France
- 2012 Artists at the Serres of Auteuil, Paris, France
- 2011 Elles, Années Trente Museum, Boulogne-Billancourt, France
- 2002 La Parade des Animaux, Monaco, Monaco
Contemporary Art's Games, Biarritz, France
- 2001 European Biennale of Sculpture, Jardin des Plantes, Paris, France
- 1994 FIAC, Galerie Darthea Speyer, Grand Palais, Paris, France
- 1974 L'Homme et son Empreinte, Sainte Suzanne Castle, Cultural House of Bourges,
Bourges, France

Pastels

- 2001 Art Center, Meudon, France
Galerie Graphics, Bordeaux, France
- 1994 Galerie de L'Échaudé, Paris, France
- 1991 Galerie Christine Louart, Bois-le-Roi, France

Decors

Stage set « La dernière nuit », Socrate, Ivry Theater, Ivry-sur-Seine
Festival « Les Tombées de la Nuit », choregraphy by Gigi Cacialeanu, with the actor
Dan Mastacan, Rennes et Colombes, France

Major collections and public commissions

- 2012 Désir D'envol, particularly collection, Greece
- 2005 Portrait de Nelligan, Fondation Nelligan order, Montreal
Le Grand Jean-Paul (Riopelle's reproduction), purchase of Montreal city, Montreal
- 2001 Order of d'Ed Tuttle, Park Hyatt, Paris Vendôme, Paris, France
- 1996 Christ, Saint Jean-Baptiste, Agneau, Chantier du Cardinal, Place Châlon, Paris, France
- 1993 Grand Couple Lyrique, Purchase from Le Bon Marché, Paris, France
- 1992 Oiseaux, Bougeoirs, Commissions from Le Mélézin Hotel, Courchevel, France
- 1991 Rostropovitch, purchase of Museum of Charlie Checkpoint, 30th Birthday, Berlin,
Germany
Le Grand Couple Heureux, purchase of Douai city, Douai, France
- 1989 Monument aux droits de l'Homme, purchase of Meudon city, Meudon, France
- 1987 Tribute of Jean-Paul Sartre, purchase of Paris city, Bibliothèque Nationale,
Paris, France
Purchase from The William & Uytendale Scott Memorial Study Collection, Bryn Mawr
College, Bryn Mawr, Pennsylvania, USA
Commission from XIIIème district, Fontaine, Paris, France
Commission from Arts Décoratifs de Paris Museum, Paris, France
Purchase from Museum of Beaux-Arts de Rennes, Rennes, France
Purchase from Museum of Beaux-Arts de Pau, Pau, France
Purchase from Fonds National d'Art Contemporain, Paris, France

ART WORKS



HOPE (ESPOIR), 2106

Monumental Bronze Sculpture

68" x 55" x 20" | 440 lb.

Customizable [X]

Numeroted 1/2, signed

Delivered with certificate of authenticity

Price on request



GRAND COUPLE HEUREUX, 1989

Monumental Sculpture in plaster and resin

Can be made in Bronze

78" x 71" x 62" | 551 lb.

Customizable : [X]

Numeroted /8, signed

Delivered with certificate of authenticity

Price on request

PARIS

9 rue de Beaune,
75007, Paris, France





L'EMBRASSE, 2002

Bronze Sculpture

19" x 18" x 12"

Customizable : [X]

Numeroted /8, signed

Delivered with certificate of authenticity

Price on request



MATERNITÉ, 2016

Bronze Sculpture

19,5" x 7,5" x 8"

Customizable : [X]

Numeroted /8, signed

Delivered with certificate of authenticity

Price on request

PARIS

9 rue de Beaune,
75007, Paris, France





COUPLE AU PARAPLUIE, 2016

Bronze Sculpture

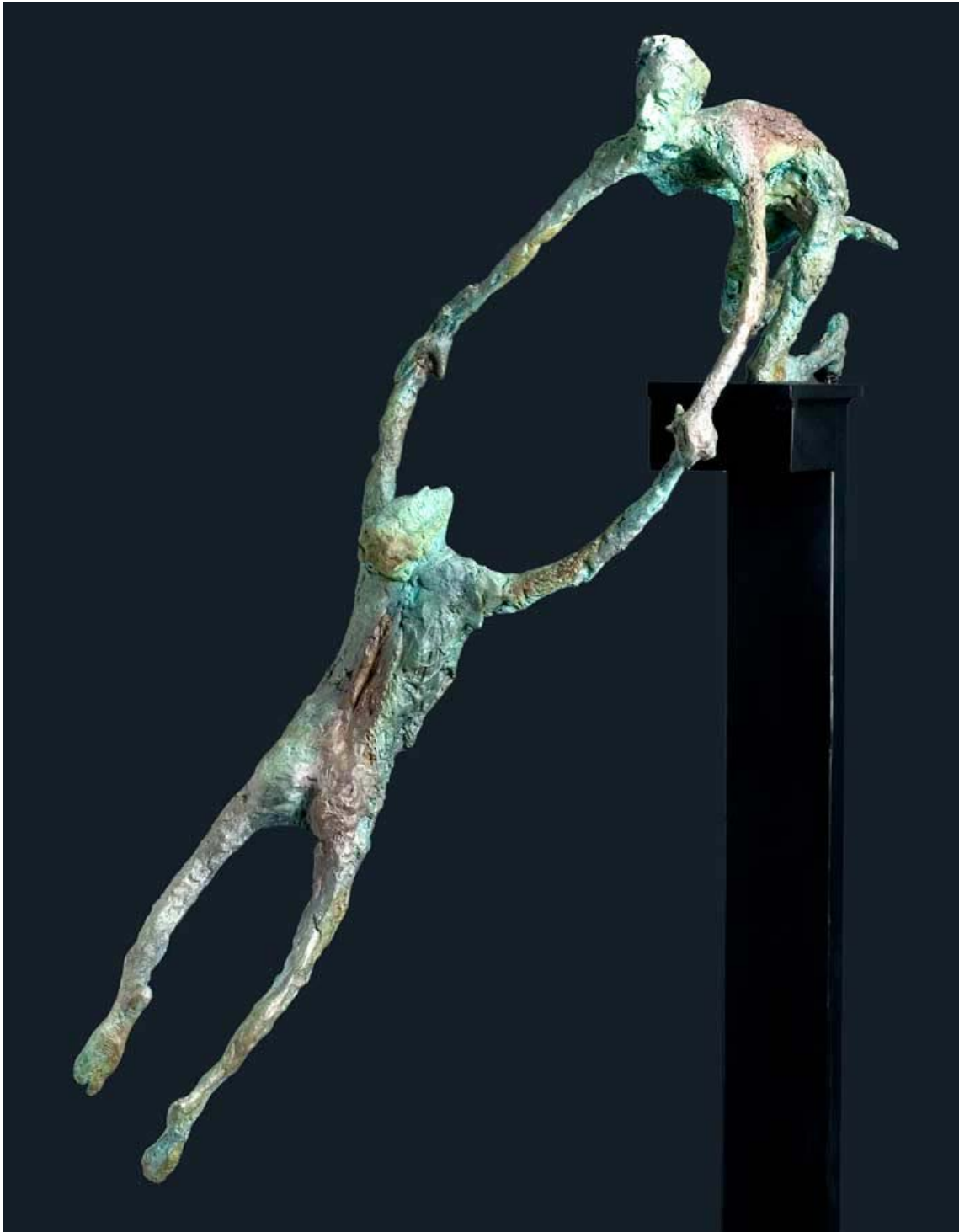
22" x 9.5" x 9.5"

Customizable : [X]

Numeroted /8, signed

Delivered with certificate of authenticity

Price on request



ENTRE DEUX FEUX, 2007

Bronze Sculpture

24" x 22" x 21"

Customizable [X]

Numeroted 8/8, Signed,

Delivered with certificate of authenticity

SOLD



LE PERSONNAGE AU CERCLE, 2013

Bronze Sculpture

28" x 14.2" x 3.9"

Customizable [X]

Numeroted 2/8, Signed,

Delivered with certificate of authenticity

Price on request



COURSE EN PENTE, 2012

Sculpture Bronze

9" x 13" x 3.9"

Customizable [X]

One-off (1/1), Signed,

Delivered with certificate of authenticity

SOLD



MERE ET ENFANT

Sculpture Bronze

3.9" x 2" x 2.8"

Customizable : [X]

Numeroted /8, signed

Delivered with certificate of authenticity

Price on request

PARIS

9 rue de Beaune,
75007, Paris, France





PETITE MATERNITÉ

Sculpture Bronze

8.6" x 3.9" x 3.1"

Customizable : [X]

Numeroted /8, signed

Delivered with certificate of authenticity

Price on request

ADDITIONAL INFORMATION

CUSTOMIZABLE [✓]

Can be made in different sizes and/or materials despite its singularity.

In some cases, can also be used as a model to create a different work.

Tailor-made is our mindset, in addition to the different works and materials we present in our catalogues, we develop various projects and 3Ds in preparation for our development.

[Contact us](#) of a tailor-made project.

CUSTOMIZABLE [X]

As it stands, this work is a spontaneous creation, the result of the inspiration and know-how of the artist.

It is either a unique piece or a limited edition.

Although this is not initially planned, the creation of a personalized and or tailor-made version of this work requires prior study.

[Contact us](#) for further information.

SIZES & WEIGHTS

By default, in French, dimensions and weight are expressed in centimeters (cm) and kilograms (kg.)

By default, in English, dimensions and weights are expressed in inches (") and pounds (lb.)

ADDITIONAL SALES TERMS AND CONDITIONS

PRICE & PAYMENT

All prices are expressed in EURO [€].

Prices do not include shipping and insurance fees.

Payments by cheques are not accepted.

Cheques will be systematically destroyed upon receipt.

Bank transfers must be made in EURO [€] currency, no fees must be taken in charge by the Gallery.

The shipment or the design of the goods will not be done before Galerie des Lyons Bank's approval.

This may result in additional shipping and delivery delays.

The Galerie des Lyons cannot be held responsible for this additional delay.

TRANSPORTS

Transport costs and conditions shall be defined on a case-by-case basis. Galerie des Lyons reserves the right to apply specific and additional conditions when deemed necessary.

© COPYRIGHT

This catalogue may not be reproduced in whole or in part unless specific prior written authorization of Galerie des Lyons SASU.

NOTE

Information on various catalogues and electronic media (electronic documentation, interactive catalogue, Site, newsletter, management notices, notices and advertising materials) are as faithful as possible but are only given for information purposes and may be modified at any time without notice. Photographs illustrating the Products Information on various catalogues and electronic media do not fall within the scope of the contract. GALERIES DES LYONS would especially like to remind its customers that a major part of the Products offered are handcrafted by Artisans and craftsmen and that some of these Products can be made on demand. Also, each Product is unique and cannot be identical to the visuals presented on the Site. GALERIES DES LYONS makes its best efforts to provide a description of the characteristics of each Product and the minor modifications to be made due to the artisanal manufacture of the Products. We reserve the right to alter at any time the specifications stated without notice, whenever technical requirements shall so demand.

ART DIRECTION
GALERIE DES LYONS SASU

SASU au capital de 160 000 €
RCS Paris : B 338 047 525
Siret : 338 047 525 000 39
N° TVA : FR 21 338 047 525